



Image: Lundgaard & Tranberg

Playhouse site in relation to Opera House



Image: Lundgaard & Tranberg

Section of program relationships to water



Image: Lundgaard & Tranberg

Night time activation of public spaces



Image: Lundgaard & Tranberg

View of 650 seat main theater



Image: Lundgaard & Tranberg

Public events on promenade

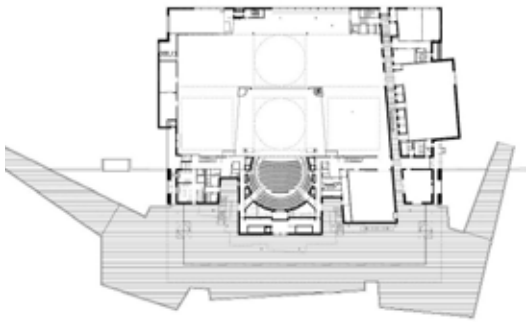


Image: Lundgaard & Tranberg

First floor plan of Playhouse and promenade



Image: Lundgaard & Tranberg

Promenade approach to Playhouse



Image: Kate Reef

Rear of building with windows to back stage



Image: Lundgaard & Tranberg

Section of Playhouse and promenade



Image: Heli Ojamaa

View of indoor public space



Image: Kate Reef

Harborside promenade and building overhang

ROYAL DANISH PLAYHOUSE

Study by Kate Reef + Heli Ojamaa

- Location:** Sankt Annæ Plads, Copenhagen
- Architect:** Lundgaard & Tranberg
- Engineers:** COWI
- Client:** Royal Danish Theater
- Constructed:** 2007
- Cost:** 71,000 EUR (~ 96,000 USD)

The Royal Danish Playhouse was completed as recently as 2007 and is already a cultural institution, holding a prominent position in the Copenhagen Harbor. The playhouse acts as an anchor for the meeting of city and sea, reinforcing the existing urban spatial qualities.

The playhouse is rooted in the context of its historic neighborhood and is clad in copper; integrating the stage tower in the Copenhagen skyline of copper domes and spires.



Google Maps 2013

■ SITE: Sankt Annæ Plads, Copenhagen